

TWIN PEAK

Dimensions (mm)	3870h x 4150w x 1000d
Weight	7200kg
Shell	Concrete - off the form board finish
Firebox	6mm Black Steel Firebox
Flue	1720mm Matt Black Stainless Steel Flue
Grill	Stainless Steel Cooking Grill
Hearth	Polished Concrete
Door	Black Mesh

FLOOR PROTECTOR

Please refer to Clause 3.3 in the AS/NZS 2918 standards to comply with the building regulations if installing an outdoor room.

If installing in an outdoor space where there is a timber deck, the following rule must be followed, Hearth extensions shall extend at least 16 inches (508 mm) in front of and at least 8 inches (305 mm) beyond each side of the fireplace opening.

Please note this is a non-tested appliance.

FLUE REQUIREMENTS

The below information must be followed if the fireplace is going to be installed as part of a roof structure. This is also a recommendation when being installed free standing in an outdoor area.

When the fireplace flue is penetrating the roof, the flue pipe will have a diameter of 300mm and the outer casings will be 350mm and 400mm. See clause 4.6.3 in AS/NZS 2919 figure 4.4, the outer casing needs a minimum clearance of 25mm from any heat sensitive materials.

The minimum height of the top of the flue varies depending on where it is on the roof:

- The flue top must be at least 600 mm above the roof apex.

This ensures correct operation of the burner, limits back draughts and prevents flue gases impinging on the roof.

A heat shield can also be used to reduce flue pipe clearance below ceiling level (see clause 4.3 in AS/NZS 2918:2018).

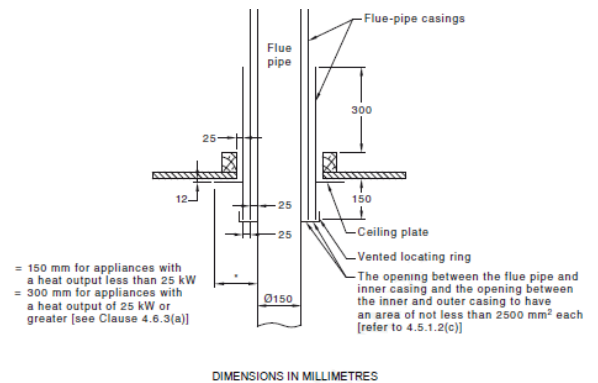
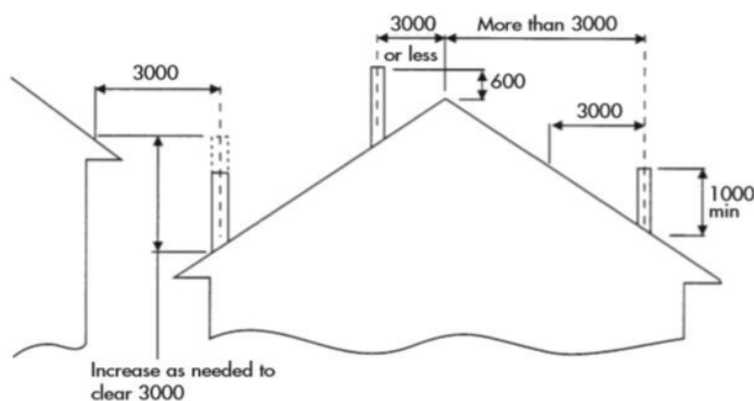


FIGURE 4.4 EXAMPLE OF CEILING PENETRATION FOR UNTESTED FLUE SYSTEMS

CONCRETE STRUCTURE CLEARANCES FROM COMBUSTIBLE MATERIALS

Flue liners are not required for ordinary concrete chimneys, however a ventilated space of 50mm (minimum) needs to be provided between the outer face of the concrete structure and any combustible material.

This is in accordance with Acceptable solution A/AS2 – 7.5.11

HEARTH REQUIREMENTS

The Twin Peak comes with a concrete structural casing around the steel firebox. It is recommended that the Twin Peak is installed upon a non-combustible flooring (i.e. Masonry, granite, concrete).

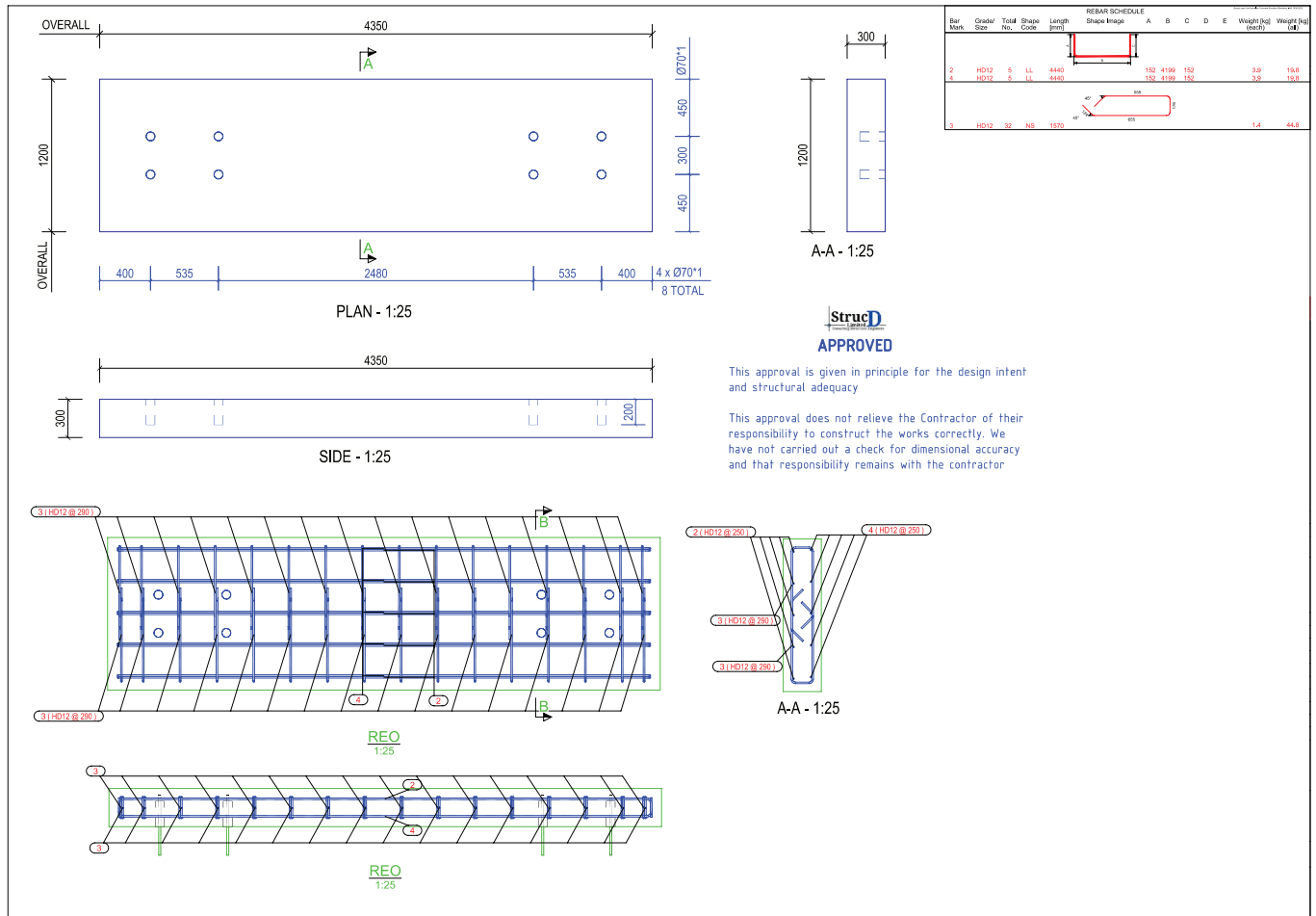
Combustible floor Hearth extension (Floor protector) under, in front and each side of the fireplace: Where the flooring is deemed a combustible floor (i.e. Timber decking). A heat resistant floor protector (i.e. Masonry or concrete) to be installed under, in front and on each side of the fireplace. Floor protector under the fireplace shall be no less than 75mm thick and to include heat resistant spaces that will form an air gap of not less than 25mm. Air gaps openings must allow for ventilation at edge of the floor protector in accordance with AS/NZS2918:2018 standards. In front of the fireplace where it shall be at a minimum of 406mm at the front, with a minimum of 203mm length either side of the fireplace opening in accordance with AS/NZS2918:2018.

Clearance in front of the fireplace: No combustible material to be any closer than 1000mm from the opening of the fireplace.

FOUNDATION REQUIREMENTS

Please contact Trendz to acquire a set of relevant engineers' drawings for the concrete foundations required for your Trendz Fireplace. Trendz will be able to advise which drawings apply to your specific situation.

TWIN PEAK



CONSENT REQUIREMENTS

Trendz recommends obtaining a building consent, where required, for solid fuel-burning appliances in accordance with the local regulations and/or councils. The application should consider the requirements of the Building Code, AS/NZS 2918 Domestic solid fuel burning appliances, Trendz Outdoors manufacturer's installation instructions and the National Environmental Standards for Air Quality.

If being installed with the flue penetrating the roof of a building, an Application for building consent for a residential wood burner needs to be completed. It must then comply with AS/NZS 2918:2018 Standard.

CONSENT REQUIREMENTS

Trendz recommends obtaining a building consent, where required, for solid fuel-burning appliances in accordance with the local regulations and/or councils. The application should consider the requirements of the Building Code, AS/NZS 2918 Domestic solid fuel burning appliances, Trendz Outdoors manufacturer's installation instructions and the National Environmental Standards for Air Quality.

If being installed with the flue penetrating the roof of a building, an Application for building consent for a residential wood burner needs to be completed. It must then comply with AS/NZS 2918:2018 Standard.

WARRANTY

The design of the outdoor fireplace has been done in accordance with AS/NZS2918:2018. The user should satisfy themselves that the installation is fit for purpose and complies with all local and national codes.

All Trendz outdoor fireplaces come with a 2 year manufacturers guarantee.

- a) In the event that any part of your TRENDZ OUTDOOR FIRE is found within 2 years of the invoice date to have undergone structural failure due to faulty workmanship or materials. This will not include slight cracks (5mm or less) within the concrete which may occur due to the heat output of the fireplace.
- b) And that defect is not due to I. Negligence, abuse, accidents, lack of maintenance or improper installation; II. Products tampered with or modified III. Fair wear and tear Trendz Outdoor Fires will:
- c) Repair or replace the part found in Trendz Outdoor Fire's judgement to have been defective in workmanship and materials. Note: Small surface cracks will often appear after the fire has been put into service.

These are an inevitable result of the heat process and in no way will affect the structural integrity of the product. Warranty does not cover rust. It is recommended that the fire box is cleaned and recoated every 4 - 6 months with a heat-resistant paint.

CAUTION

- This appliance is not intended for use by persons (including children) with reduced physical, sensory, or mental capabilities, or lack of experience and knowledge unless they have been given supervision or instruction concerning use of the appliance by a person responsible for their safety.
- Do not leave children unattended near the alighted fire and keep them well away from the burner when in use. Supervise young children to ensure that they do not play with the appliance.
- Do not use flammable liquids or aerosols to start or rekindle the fire. Also, do not use such flammable materials near this appliance when it is operating.
- Only use burning appropriate fuels in accordance with the National Environmental Standards for Air Quality and Local Council standards. Dry firewood, sourced from a reputable wood merchant, is the most appropriate fuel for use in wood burners. Dry wood has a lower moisture content than wet wood and when burned it produces less smoke and less particulate matter pollution. The size and quality of your wood also has an effect on the efficiency of your wood burner.
- Always keep clothing, firewood, furnishing, and other combustible materials at a safe distance from the fire.
- Do not touch any part of the fire other than the surrounding concrete casing as all of the other components can be extremely hot.
- Do not attempt to clean or maintain the fire when in use or with hot embers in the firebox. Ensure that embers and all other parts of the burner have cooled down completely before starting ash removal or other maintenance.
- Do not use the fire if there is a malfunction, a suspicion of breakage, or unusual noise. Contact Trendz Outdoors.